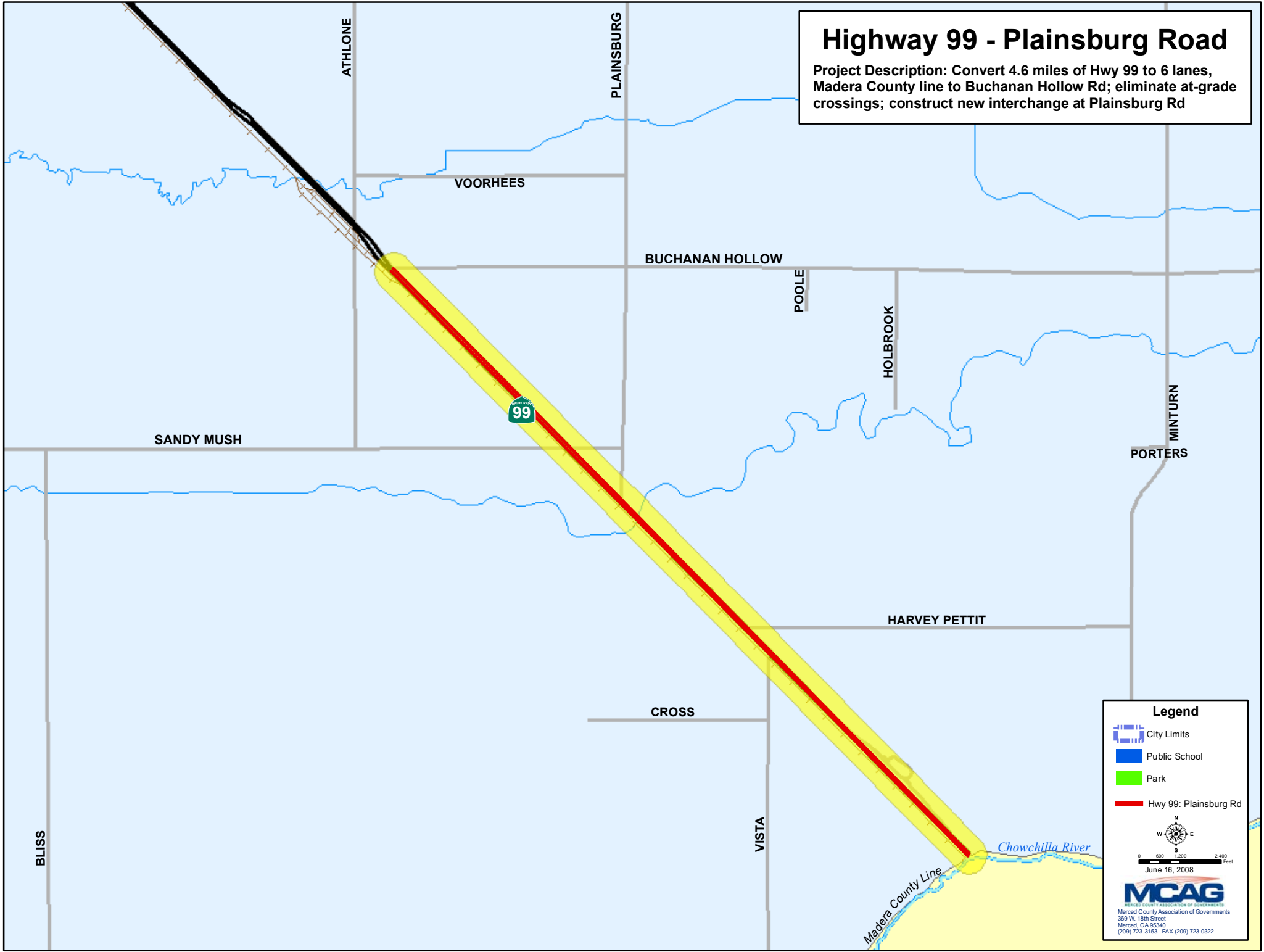


Highway 99 - Plainsburg Road

Project Description: Convert 4.6 miles of Hwy 99 to 6 lanes, Madera County line to Buchanan Hollow Rd; eliminate at-grade crossings; construct new interchange at Plainsburg Rd



Legend

- City Limits
- Public School
- Park
- Hwy 99: Plainsburg Rd

0 600 1200 2400 Feet

June 16, 2008

MCAG
Merced County Association of Governments
369 W. 18th Street
Merced, CA 95340
(209) 723-3153 FAX (209) 723-0322